

AERA 3" REFLEX CYLINDER

NEW CONSTRUCTION



Aera Reflex balances the functionality of a downlight with the flexibility and presence of an adjustable cylinder. Available in 2" and 3" diameters, it transitions between flush, semi-recessed, and extended positions, extending below the ceiling plane and providing up to 90° tilt and 355° rotation, with adjustment from below the ceiling for precise directional control. Built on the Aera optical platform, Reflex supports ambient and accent lighting within a unified system while delivering precision optics and refined architectural integration.

Beam Angles



Performance

LUMEN OUTPUT ¹	WATTS	EFFICACY
1132 lm	10 W	113 lm/W
1545 lm	14 W	110 lm/W

¹ Lumen packages are assuming 3500K, 80+ CRI, 35° beam, bevel baffle, SDL lens option.

Light Source



Aera Collection Brochure



Cylinders Brochure



Aera Cylinder Family (Refer to other spec sheets)

, 3"/, 4"/, 5" 4" Seal Pendant Asymmetric"/>	, 3"/, 4"/, 5" 4" Seal Wall Asymmetric"/>	, 3"/, 4"/, 5" 4" Seal Surface Asymmetric"/>
Pendant Asymmetric	Wall Asymmetric	Surface Asymmetric
Pendant Wall Wash		Surface Wall Wash

Inflex Cylinder

, 3"/, 4" Pendant"/>	, 3"/, 4" Surface"/>
Pendant	Surface

Flex Cylinder

Pendant	Recessed	Surface	Wall

Reflex Cylinder

, 3" Recessed"/>
2" / 3" Recessed

www.lumenwerx.com
T (514) 225-4304

© Lumenwerx, ULC. All rights reserved.



Lumenwerx reserves the right to modify product specifications without notification.
AERA3-REFLEX-CYLINDER-SPEC-REV0 May 27, 2026

AERA 3" REFLEX CYLINDER

NEW CONSTRUCTION



Project: _____

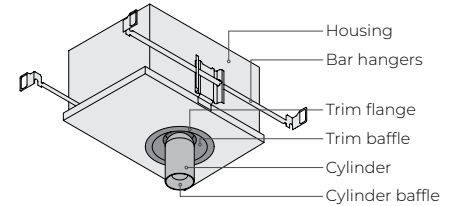
Type: _____

Order Guide

For SOLA Dim-to-Warm and DUO Tunable White order guide, see page 3.

1 - Housing

LUMINAIRE ID	TRIM STYLE	LIGHT SOURCE	INSTALLATION TYPE
AE3REFCY		SW	
AE3REFCY - Aera 3" Reflex Cylinder	TRM - Flanged trim TLMP - Trimless drywall mudplate TLMW - Trimless millwork	SW - Static white	NIC - Type Non-IC IC¹ - Type-IC ¹ See Wattage section for limitations.



MOUNTING OPTION ²	VOLTAGE	WATTAGE	DIMMING	REMOTE ⁷
ASB - Adjustable standard bar hangers FMB - Flush mount bars ACB - Adjustable commercial bar hangers AHC - Adjustable hat channel bars NA - No bar hangers ² See page 5 for more details.	120V - 120V 277V - 277V UNV - 120V-277V 347V³ - 347V ³ Available with RD1 driver only. Please consult factory.	10W - 10 W output, up to 1132 lm 14W⁴ - 14 W output, up to 1545 lm ⁴ Not available with IC.	INTEGRAL DI - 1% 0-10V ELV⁵ - ELV 120V TRI⁵ - TRIAC 120V DA⁶ - DALI ⁵ Available with 120V only. ⁶ On-site commissioning is required.	REMOTE⁷ RD1 - 1% 0-10V RELV⁸ - ELV 120V RTRI⁸ - TRIAC 120V RLDE1⁹ - Lutron Hi-lume Premier Hi-lume 1% Eco RDA⁹ - DALI RELD1 - eldoLED 1% ECOdrive 0-10V RELD0 - eldoLED 0.1% SOLOdrive 0-10V RPEQ0⁹ - Lutron Hi-lume Premier 0.1% EcoSystem +EB¹⁰ - Emergency battery ⁷ A remote driver box is provided. ⁸ Available with 120V only. ⁹ On-site commissioning is required. ¹⁰ To specify, add +EB to the selected dimming option, e.g. RD1+EB.

2 - Cylinder & Trim

LUMINAIRE ID	TRIM STYLE Specify same as Housing	TRIM BAFFLE FINISH	TRIM FLANGE FINISH Specify NA for Trimless	CYLINDER FINISH
AE3REFCYL				
AE3REFCYL - Aera 3" Reflex Cylinder	TRM - Flanged trim TLMP - Trimless drywall mudplate TLMW - Trimless millwork	FTMW - Matte white FTMB - Matte black FSPC - Satin silver FSSPC - Matte silver FCHP - Champagne FDBZ - Dark bronze CF# - Custom finish, specify RAL#	FTMW - Matte white FTMB - Matte black FSPC - Satin silver FSSPC - Matte silver FCHP - Champagne FDBZ - Dark bronze CF# - Custom finish, specify RAL# NA - Not applicable	FTMW - Matte white FTMB - Matte black FSPC - Satin silver FSSPC - Matte silver FCHP - Champagne FDBZ - Dark bronze CF# - Custom finish, specify RAL#

CYLINDER BAFFLE STYLE	CYLINDER BAFFLE FINISH	LENS * See page 7 for details	LIGHT SOURCE Specify same as Housing	BEAM
			SW	
BVL - Bevel PHL - Pinhole BVLD - Decorative bevel	FTMW - Matte white FTMB - Matte black FSPC - Satin silver FSSPC - Matte silver FCHP - Champagne FDBZ - Dark bronze CF# - Custom finish, specify RAL#	At baffle (choose 1 option) Specify NOL for Pinhole SDL - Soft diffused lens, Solite FDL - Frosted diffused lens CL - Clear lens NOL - No lens	SW - Static white	10DEG - 10° Very narrow spot 15DEG - 15° Narrow spot 25DEG - 25° Spot 35DEG - 35° Narrow flood 50DEG - 50° Wide flood 80DEG - 80° Very wide flood 90DEG - 90° Open flood

* LSDL or LFDL at light element cannot be combined with SDL or FDL at baffle.

COLOR QUALITY	CRI	COLOR TEMPERATURE	ACCESSORIES * See page 7 for details
2STP - 2 Step MacAdam Ellipse 3STP - 3 Step MacAdam Ellipse	80CRI - 80+ CRI 90CRI - 90+ CRI 95CRI - 95+ CRI	22K¹¹ - 2200K 24K¹¹ - 2400K 27K - 2700K 30K - 3000K 35K - 3500K 40K - 4000K 50K¹¹ - 5000K ¹¹ Not available with 95+ CRI.	At light element^{12,13} (choose up to 2 options) LSDL - Soft diffused lens, Solite LFDL - Frosted diffused lens LS - Linear spread HEX¹⁴ - Hex louver NA - None ¹² Separate codes with a "*" if more than one is specified, e.g. LSDL+LS. ¹³ LSDL and LFDL cannot be combined. LS and HEX cannot be combined. ¹⁴ Not available with 80°/90° beam options.



AERA 3" REFLEX CYLINDER

NEW CONSTRUCTION



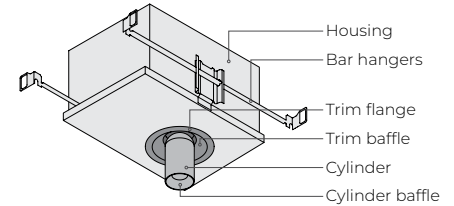
Project: _____
Type: _____

Order Guide - SOLA Dim-to-Warm and DUO Tunable White

For static white order guide, see page 2.

1 - Housing

LUMINAIRE ID ¹	TRIM STYLE	LIGHT SOURCE	INSTALLATION TYPE
AE3REFCY			NIC
AE3REFCY - Aera 3" Reflex Cylinder	TRM - Flanged trim TLMP - Trimless drywall mudplate TLMW - Trimless millwork	SOLA - Dim-to-warm single channel control DUO - Tunable white 2-channel control	NIC - Type Non-IC



MOUNTING OPTION ¹	VOLTAGE	WATTAGE	DIMMING		
		10W			
ASB - Adjustable standard bar hangers FMB - Flush mount bars ACB - Adjustable commercial bar hangers AHC - Adjustable hat channel bars NA - No bar hangers ¹ See page 5 for more details.	120V - 120V 277V - 277V UNV - 120V-277V	SOLA 10W - 10 W output, up to 679 lm DUO 10W - 10 W output, up to 715 lm	INTEGRAL		REMOTE ⁴
			SOLA SD1 - Single 0-10V input SELV ² - ELV 120V STRI ² - TRIAC 120V SDA ³ - DALI SELDI - eldoLED 1% ECOdrive 0-10V SELDO - eldoLED 0.1% SOLOdrive 0-10V SPEQO ³ - Lutron Hi-lume Premier 0.1% EcoSystem ² Available with 120V only. ³ On-site commissioning is required.	DUO DDI - Dual 0-10V input for CCT/intensity	SOLA RSD1 - Single 0-10V input RSELV ⁵ - ELV 120V RSTRI ⁵ - TRIAC 120V RSLDE1 ⁶ - Lutron Hi-lume 1% Eco RSDA ⁶ - DALI RSELD1 - eldoLED 1% ECOdrive 0-10V RSELDO - eldoLED 0.1% SOLOdrive 0-10V RSPEQO ⁶ - Lutron Hi-lume Premier 0.1% EcoSystem
⁴ A remote driver box is provided. ⁵ Available with 120V only. ⁶ On-site commissioning is required. ⁷ To specify, add +EB to the selected dimming option, e.g. RDD1+EB.					

2 - Cylinder & Trim

LUMINAIRE ID	TRIM STYLE Specify same as Housing	TRIM BAFFLE FINISH	TRIM FLANGE FINISH Specify NA for Trimless	CYLINDER FINISH
AE3REFCYL				
AE3REFCYL - Aera 3" Reflex Cylinder	TRM - Flanged trim TLMP - Trimless drywall mudplate TLMW - Trimless millwork	FTMW - Matte white FTMB - Matte black FSPC - Satin silver FSSPC - Matte silver FCHP - Champagne FDBZ - Dark bronze CF# - Custom finish, specify RAL#	FTMW - Matte white FTMB - Matte black FSPC - Satin silver FSSPC - Matte silver FCHP - Champagne FDBZ - Dark bronze CF# - Custom finish, specify RAL# NA - Not applicable	FTMW - Matte white FTMB - Matte black FSPC - Satin silver FSSPC - Matte silver FCHP - Champagne FDBZ - Dark bronze CF# - Custom finish, specify RAL#

CYLINDER BAFFLE STYLE	CYLINDER BAFFLE FINISH	LENS * See page 7 for details	LIGHT SOURCE Specify same as Housing	BEAM
BVL - Bevel PHL - Pinhole BVLD - Decorative bevel	FTMW - Matte white FTMB - Matte black FSPC - Satin silver FSSPC - Matte silver FCHP - Champagne FDBZ - Dark bronze CF# - Custom finish, specify RAL#	At baffle (choose 1 option) Specify NOL for Pinhole SDL - Soft diffused lens, Solite FDL - Frosted diffused lens CL - Clear lens NOL - No lens	SOLA - Dim-to-warm single channel control DUO - Tunable white 2-channel control	25DEG - 25° Spot 35DEG - 35° Narrow flood 60DEG - 60° Wide flood 80DEG - 80° Very wide flood 90DEG - 90° Open flood

* **LSDL** or **LFDL** at light element cannot be combined with **SDL** or **FDL** at baffle.

COLOR QUALITY	CRI	COLOR TEMPERATURE	ACCESSORIES * See page 7 for details
3STP	90CRI		
3STP - 3 Step MacAdam Ellipse	90CRI - 90+ CRI	SOLA 30K18K - 3000K to 1800K 27K18K - 2700K to 1800K DUO 65K27K - 6500K to 2700K 50K27K - 5000K to 2700K	At light element ^{8,9} (choose 1 option) LSDL - Soft diffused lens, Solite LFDL - Frosted diffused lens LS - Linear spread HEX ¹⁰ - Hex louver NA - None
⁸ Separate codes with a "+" if more than one is specified, e.g. LSDL+LS. ⁹ LSDL and LFDL cannot be combined. LS and HEX cannot be combined. ¹⁰ Not available with 80°/90° beam options.			



AERA 3" REFLEX CYLINDER

NEW CONSTRUCTION

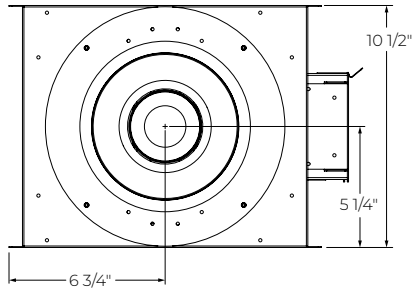
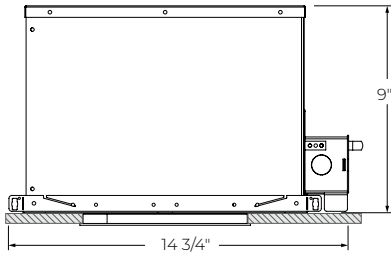


Housing Dimensions

Installation types *

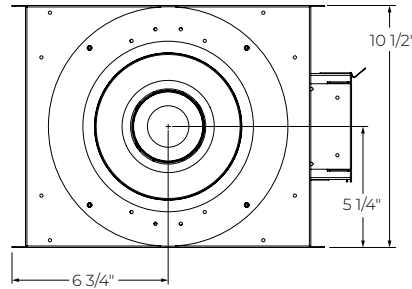
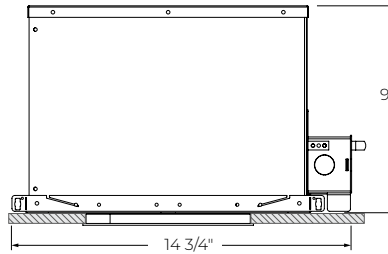
NIC - Type Non-IC

- Minimum plenum height: 9 1/2"
- Clearance between sides of luminaire and parts of building must be 1/2" minimum; clearance to insulating materials to be 3" minimum



IC - Type-IC

- Minimum plenum height: 9 1/2"
- No setback from insulation required



* Bar hangers are not shown in the drawings.

AERA 3" REFLEX CYLINDER

NEW CONSTRUCTION



Mounting Options

ASB - Adjustable Standard Bar Hangers	
	<ul style="list-style-type: none"> • Use in commercial and residential applications. • Suitable for grid ceiling and drywall mounting. • Adjustable to various heights. • Joist spacing: 14" to 24".
FMB - Flush Mount Bars	
	<ul style="list-style-type: none"> • Use in residential applications. • Suitable for wood, metal, and drywall mounting. • Joist spacing: 14" to 24".
ACB - Adjustable Commercial Bar Hangers	
	<ul style="list-style-type: none"> • Use in commercial and residential applications. • Suitable for grid ceiling, drywall, metal, wood, and frame mounting. • Adjustable to various heights. • Fits into C-channel notches in a butterfly bracket. • Joist spacing: 16" to 24". Extensions to 36" and 48" available, consult factory. • T-bar spacing: 24"
AHC - Adjustable Hat Channel Bars	
	<ul style="list-style-type: none"> • Use in commercial and residential applications. • Suitable for wood ceiling and drywall mounting. • Adjustable to various heights. • Fits into C-channel notches in a butterfly bracket. • Hat channel spacing: 24" and 36".

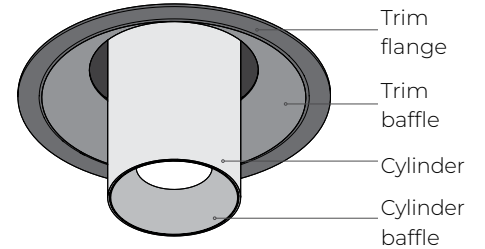
AERA 3" REFLEX CYLINDER

NEW CONSTRUCTION



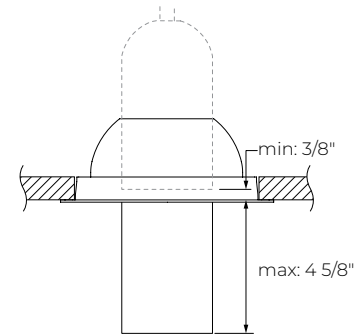
Cylinder & Baffle Details

BVL Bevel	PHL Pinhole	BVLD Decorative bevel
<p> Cylinder finish Cylinder baffle finish Matte black </p>		



Note: Stem and pivoting arm are matte black.

RETRACTABLE CYLINDER



Rotation: up to 355°
Tilt: up to 90°

Trim Details

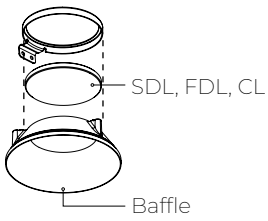
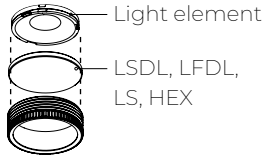
TRM Flanged Trim	TLMP Trimless Drywall Mudplate	TLMW Trimless Millwork
<p> Trim baffle finish Trim flange finish Matte black </p>		

AERA 3" REFLEX CYLINDER

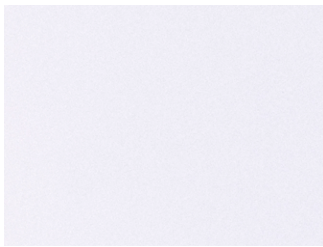
NEW CONSTRUCTION



Lens and Accessories



Finishes



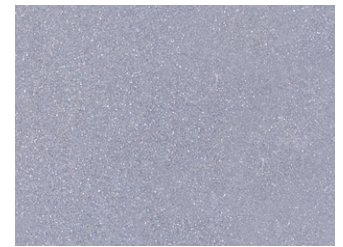
FTMW - Matte white



FTMB - Matte black



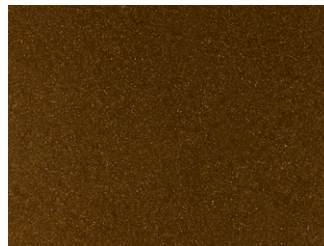
FSPC - Satin silver



FSSPC - Matte silver



FCHP - Champagne



FDBZ - Dark bronze

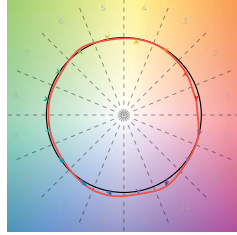
AERA 3" REFLEX CYLINDER

NEW CONSTRUCTION



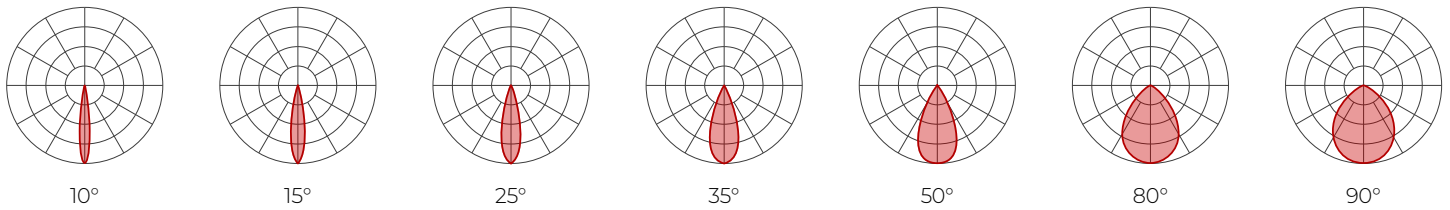
Color Quality

COLOR QUALITY - 3500K	
TM-30 Rr	90
TM-30 Ra	100
CRI	90+
R9	> 50



Photometrics

Values calculated based on 3500K, bevel baffle, and SDL lens option.



Delivered lumens (LM)

CRI	80+ CRI							90+ CRI							95+ CRI						
	BEAM	10°	15°	25°	35°	50°	80°	90°	10°	15°	25°	35°	50°	80°	90°	10°	15°	25°	35°	50°	80°
10 W	950	1056	1127	1132	1003	902	902	888	987	1053	1058	937	843	843	684	760	811	815	721	649	649
14 W	1297	1441	1539	1545	1370	1233	1233	1212	1347	1438	1444	1280	1152	1152	933	1037	1107	1112	986	887	887

Efficacy (LM/W)

CRI	80+ CRI							90+ CRI							95+ CRI						
	BEAM	10°	15°	25°	35°	50°	80°	90°	10°	15°	25°	35°	50°	80°	90°	10°	15°	25°	35°	50°	80°
10 W	95	106	113	113	100	90	90	89	99	105	106	94	84	84	68	76	81	81	72	65	65
14 W	93	103	110	110	98	88	88	87	96	103	103	91	82	82	67	74	79	79	70	63	63

MULTIPLIERS

Please follow the multiplier tables to ensure correct lumen value. Beams, CCT, baffle styles, baffle colors, lensing, and accessories will change the lumen value.

CCT	BAFFLE STYLE AND COLOR	LENS * (At baffle)	ACCESSORIES * (At light element)
2200K	0.80	SDL - Soft diffused lens, Solite	1
2400K	0.87	FDL - Frosted lens	0.8
2700K	0.94	CL - Clear lens	1.1
3000K	0.98	NOL - No lens	1.1
3500K	1		
4000K	1.05		
5000K	1.05		

BAFFLE STYLE AND COLOR	LENS * (At baffle)	ACCESSORIES * (At light element)
Bevel	White	1
	Black	1
Pinhole	White	0.92
	Black	0.92
Decorative bevel	White	1
	Black	1

* When more than one lens or accessory is specified, multiply together the value of each lens and/or accessory.
e.g. NOL + LSDL + LS = 1.1 x 1 x 0.84 = 0.924

For SOLA and DUO, please consult factory.



AERA 3" REFLEX CYLINDER

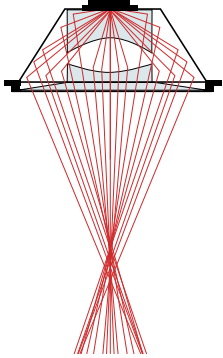
NEW CONSTRUCTION



Technical Specifications

OPTIC

XPoint™ Refraction Technology optics provide precise optical control in a remarkably compact form. Micro optical paths from the chip on board converge and then disperse in precise beam angles, resulting in a crisp and exacting light quality.



LIGHT SOURCE

Static white

Compact COB (Chip-On-Board) LED module, available in 2200K, 2400K, 2700K, 3000K, 3500K, 4000K, and 5000K with a choice of 80+ CRI, 90+ CRI, or 95+ CRI, with elevated R9 value for 90+ CRI and above. Color consistency is maintained to within 2 SDCM. All LEDs have been tested in accordance with IESNA LM-80-08 and the results have shown L80 lumen maintenance greater than 60,000 hours. Absolute product photometry is measured and presented in accordance with IESNA LM-79, unless otherwise indicated.

Chromawerx SOLA

Chromawerx SOLA is single-channel control that dims output while warming the color temperature in a pre-determined relationship. Two color temperature range options are offered: 3000K to 1800K, and 2700K to 1800K. A simple analog control adjusts a specially populated LED array to emulate the effect of dimming a filament source.

Chromawerx DUO

Chromawerx DUO offers a two-channel control system which uses analog or digital protocols for synchronous control of both cool to warm LED arrays - maintaining a CRI above 90. Two color temperature range options are offered: 6500K to 2700K, and 5000K to 2700K. The range of color DUO offers is useful for entraining circadian rhythms, stimulating alertness, and compensating for jet lag among other applications. The Chromawerx drivers are programmed to limit maximum light output and power usage across all color temperatures. When paired with DALI drivers (DDA/DDA8), color tuning follows a linear dimming curve.

ELECTRICAL

Unless otherwise specified, dimming down to 1%. At maximum driver load: efficiency>84%, PF>0.9, THD<20%. ELV and TRIAC dimming performance (including minimum dimming percentage) subject to dimmer selection.

Integral: 0-10V, ELV, TRIAC, Lutron Hi-Lume EcoSystem, DALI, eldoLED 0.1% SOLOdrive 0-10V, eldoLED 1% ECOdrive 0-10V

Remote: 0-10V, ELV, TRIAC, Lutron Hi-Lume EcoSystem, DALI, eldoLED 0.1% SOLOdrive 0-10V, eldoLED 1% ECOdrive 0-10V, DMX, Lutron DALI-2 digital

Emergency battery option: Remotely-installed, long-life, high-temperature, maintenance-free, Bodine Lithium-Ion battery pack with self-test functionality, test switch and charge indicator. IOTA and Fulham options available upon request. Minimum of 90 minutes operation, and recharge time of 24 hours. For fixtures less than 10 W, the battery provides 6 W of emergency light output. For fixtures 10 W and over, the battery provides 10 W.

PoE

Depending on the PoE manufacturer selected, Lumenwerx will install the node in factory as either integral to the luminaire or as a remote module. Factory programming of the PoE node may or may not enable the following functionalities: lumen package, DUO (tunable white), QUADRO (RGBW), emergency battery backup, and sensor integration. These must be addressed and evaluated on a case-by-case basis.

FINISH

Standard powder-coat paint available in matte white, matte black, satin silver, matte silver, champagne, and dark bronze. Custom colors also available (provide RAL #).

CONSTRUCTION

Housing: For new construction, 22 gauge galvanized steel. Open frame or type-IC rated. 18 gauge galvanized steel junction box with ½" trade size knockouts. Adjustable standard, flush mount, adjustable commercial, and adjustable hat channel bar hangers are available as mounting options.

Heat sink: Die-cast aluminum

Trim baffle: Die-cast aluminum mounted with retaining spring clips

Trim style: Trimmed and trimless with mudplate or millwork adapter

Cylinder baffle: Die-cast aluminum

Cylinder baffle style: Bevel, pinhole, and decorative bevel

Cylinder: Die-cast and extruded aluminum

WEIGHT

12.9 lbs - 5.9 kg

AERA 3" REFLEX CYLINDER

NEW CONSTRUCTION



LENS AND ACCESSORIES



Soft diffused lens, Solite



Frosted diffused lens



Clear lens



Linear spread



Hex louver

ENVIRONMENT

Ambient temperature at fixture location shall be within 0°C/32°F - 25°C/77°F, indoor dry or damp as well as outdoor damp use (canopies or marquees).

CERTIFICATIONS

ETL: Rated for indoor dry/damp locations. Conforms to UL Standard 1598 and certified to CAN/CSA Standard C22.2 No. 250.0.

IC rated: Suitable for direct contact with insulation when specified with IC installation type options.

WARRANTY

Lumenwerx provides a five-year limited warranty on electrical and mechanical performance of the luminaires, including the LED boards, drivers, and auxiliary electronics. Lumenwerx will repair or replace defective luminaires or components at our discretion, provided they have been installed and operated in accordance with our specifications. Other limitations apply, please refer to the full warranty on our website.